



**CALLAGHAN
COLLEGE**

Wallsend Campus

WALLSEND CAMPUS NEWS

February 2024



Student Leadership Team 2024

In this issue

**Wellbeing
Team Info.**

**Our Digital
Systems**

**Uniform
information**

Wallsend Campus
02 4951 1811
wallsend-h.school@det.nsw.edu.au



Principal's Welcome

Mr Paul Taylor, Principal

Welcome back to Callaghan College Wallsend Campus! We're thrilled to have our students and families return as we continue to focus on wellbeing and learning, ensuring that all students are known, valued, and supported to grow academically.

A special welcome goes out to our new Year 7 students and their families, as well as any other new families joining our student-centered school community. It's been a positive start to the year, with students embodying our values of respect, responsibility, and excellence. We're grateful to all parents and carers for supporting our students to be prepared for the new school year.

In 2024, we're committed to improving attendance and have exciting opportunities, including being part of an Artificial Intelligence pilot with NSW EduChat. This customised GenAI app has the potential to revolutionise the way students and teachers use technology in learning. We're dedicated to exploring its impact and encourage students and parents to provide feedback on the app. Our staff are committed to providing the best educational programs and support for our students, with a focus on improving outcomes and results this year.

We're also proud to continue striving for improvement in lifting the achievement of all students, reflecting our dedication to continuous improvement. Our excellent NAPLAN value-added performance results showcase the growth in skills and knowledge demonstrated by our students each year, with significant improvement in literacy and numeracy, surpassing 90% of other schools in the state.

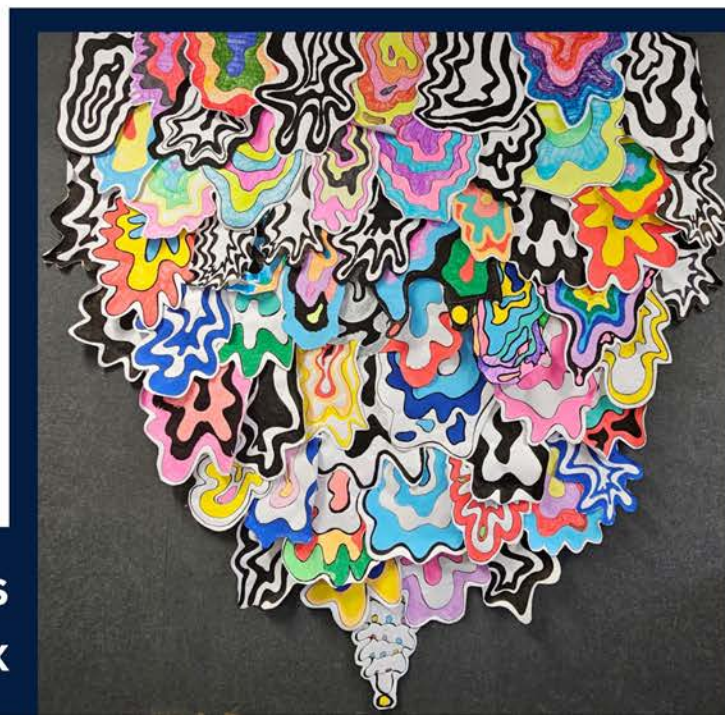


We also extend our heartfelt thanks to our parents and carers for their ongoing support and partnership in the educational journey. We recognise that student success is best achieved through the collaboration between school and parents/carers, and we are grateful for the support of our wonderful community.

As we look ahead, we anticipate a rewarding and successful year, and we appreciate the ongoing collaboration and support from all members of our school community.

Mr Paul Taylor
Principal

**Fearnley Class
Collaborative Artwork**



Key Contacts for each Year Group

**Year
7**



Mrs Mulhearn
Deputy Principal



Mr Daly
Year Advisor



Ms Tilse
Year Advisor

**Year
8**



Mrs Lambert
Deputy Principal



Mr Dunk
Year Advisor



Mrs Wells
Year Advisor

**Year
9**



Mr Psarris
Deputy Principal (Rel)



Mrs Hall
Year Advisor



Ms Sheehan
Year Advisor

**Year
10**



Mr Unthank
Deputy Principal



Miss Fekete
Year Advisor



Miss O'Brien
Year Advisor



Administration Office

Open from 8.30am until 3.15pm

Phone: 02 4951 1811

SMS Absences: 0429 55 01 88

Email: wallsend-h.school@det.nsw.edu.au

Website: <https://wallsend-h.schools.nsw.gov.au>

Bell Times and Term Dates

BELL TIMES

	MON/TUES/THURS	WEDNESDAY	FRIDAY	
PERIOD 1	8.55am	8.55am	CURIOUS CREATIONS Year 7	SPORT Years 8-10
PERIOD 2	10.00am	10.00am - Assembly 10.55am		
BREAK 1	11.00am (30 min)	11.15am (30 min)	11.00am (30min)	
PERIOD 3	11.30am	11.45am	11.30am	
PERIOD 4	12.30pm	12.40pm	12.30pm	
BREAK 2	1.30pm (30 min)	1.35pm (30 min)	Early finish: 1.30pm	
PERIOD 5	2.00pm	2.05pm		
FINISH	3.00pm	3.00pm		

2024 TERM DATES

TERM 1	Thursday 1 February to Friday 12 April 2024
TERM 2	Students return Tuesday 30 April - Friday 5 July 2024
TERM 3	Students return Tuesday 23 July - Friday 27 September 2024
TERM 4	Staff and students return Monday 14 October - Thursday 19 December 2024



Year 7 Curious Creations



If your child is absent from school...

Explain within 7 days

Education for your child is important and having regular attendance and arriving on time for school is essential for your child to achieve their educational best and increase their career and life options.

On occasion, your child may need to be absent from school. If your child is marked absent you will be sent a text message to inform you, requesting an explanation for the absence. Please respond to the message when you receive it so your child's absence can be recorded as explained (make sure to include your child's name).

When we don't receive a reason, the absence is recorded as unexplained and unjustified and will require further follow up from the school.

Should you have trouble getting your child to school, you should contact your Deputy Principal as soon as possible to discuss the issue. Strategies to help improve attendance may include a referral to the school's learning and support team or linking your child with the appropriate support networks.

Our Digital Systems

Check out our website to find full explanations, including instructional videos and screen shots. <https://wallsend-h.schools.nsw.gov.au/about-our-school/technology---ccwc.html>

You can access systems directly from the home page. Below is a guide for what each are used for:



For parents and carers: Join the Sentral Parent Portal for access to your child's timetable, attendance record, academic reports, school calendar and more.

For students: Timetable



For parents and carers: Information regarding lessons, see assignment feedback and marks, contact teachers directly.

For students: Accessible 24/7, students can access their lessons, resources, homework and assignment information.



For parents and carers: A secure payment platform for any payments to the school such as school fees and excursions. Join the School Bytes Parent Portal - <https://support.schoolbytes.education/hc/en-us/articles/5184859634191-Parent-Portal-Set-up-your-parent-portal-account>

Our Uniform - a reminder

Full school uniform is required to be worn daily unless otherwise stated. Our staff conduct uniform checks at roll marking each day and on random days we send a message to the parents/carers of any student who is out of uniform. If you require assistance providing your child with the correct uniform, please contact the Administration Office who can give you further details about our Student Assistance Scheme.

Everyday uniform items:

Button up white shirt or white polo shirt with any combination of the following (all shirts are available in short and long sleeves):

- Shorts (male/female, colour ink/navy)
- Long pants (male/female, colour ink/navy)
- Callaghan skirt (wrap around, tartan)

OR

- Callaghan dress (tartan)

Jumpers and Jackets:

- V-neck Campus fleece jumper (unisex, colour ink/navy)
- Callaghan softshell jacket (unisex, colour ink/navy)

Footwear:

- Black or white socks
- Black shoes (WHS compliant shoes and safety glasses required for practical TAS and Science lessons)

Sports uniform:

- Sports Polo Shirt – short sleeve, long sleeve (unisex, colour ink, blue detail)
- Sports shorts – (unisex, colour ink/navy)
- Sports track pants – (unisex, colour ink/navy with blue trim)
- Sport shoes/joggers



Country Feeling Uniform Shop

AT SCHOOL:

Our Uniform shop can be found on school grounds (entry via Gate 5, their flag will be outside the gate when they are open) and their regular opening hours are:

- Monday 2.30 - 3.30pm
- Wednesday 8:15 - 9.15am
- Friday 1.00pm - 2.00pm

ONLINE:

www.countryfeelinguniforms.com.au

You can order online and have your purchases delivered straight to your door (which incurs a flat \$10 delivery fee).

OPENING HOURS
Mon 2.30-3.30
Wed 8.15-9.15
Fri 1.00-2.00
(Not open Mondays in Term 3)



Online orders:
 Collect from the Uniform Shop
www.countryfeelinguniforms.com.au
country.feeling@bigpond.com
0414 651 211

UNISEX			
Polo – Short sleeve	\$32	Sports Shorts	\$25
Polo – Long sleeve	\$35	Sports Pants – Long	\$43
Sports Polo – Short sleeve	\$35	Jacket – Soft shell	\$63
Sports Polo – Long sleeve	\$38	Jumper – Fleece	\$38
GIRLS/BOYS			
Blouse/Shirt – Short sleeve	\$30	Dress Pants – Long	\$45
Blouse/Shirt – Long sleeve	\$33	Skirt – Tartan	\$50
Dress Shorts	\$35	Dress – Tartan	\$58
EXTRAS			
Scarf/Hijab	\$20	Tie	\$22

Support for Learning - Wellbeing Team

Wallsend Campus is proud of our positive school culture with student wellbeing being an important part of everything we do. Our school values are backed by a range of programs that aim to provide a safe and supportive learning and social environment for all our students.

If students would like to meet with the team they can just knock on the door of the Student Support Team Office upstairs in A Block, next to Classroom A2 to organise an appointment time, talk to their Year Advisor or email the team through Canvas.

Our Social/Emotional Wellbeing Team is dedicated to supporting students across all aspects of their wellbeing and sense of belonging.

Our team consists of caring and qualified professionals, including Student Support Officers, School Chaplain, School Counsellors, and Mrs Fowell and Miss O'Brien, our Wellbeing Advisors, who are all committed to helping our students thrive in every area of their lives.

We understand that wellbeing encompasses various dimensions, including social, emotional, physical, psychological, and developmental aspects. Therefore, our team is equipped to provide individualized support, offer group programs, and facilitate connections to external services and resources to address the diverse needs of our students.

Whether a student needs a listening ear, guidance through a challenging time, or assistance in accessing specialised support, our team is here to help. We believe in creating a safe and inclusive environment where every student feels supported and valued.



BREAKFAST CLUB

Our Breakfast Club runs every day in classroom A1 from 8.15am until 8.55am. All students are welcome to come and have some breakfast before class. Breakfast Club is also a great way to start the school day and make friends.



About our Library

Our goal at Callaghan College Wallsend Campus is to have every student read every day. Reading is a foundation for life and we have a large range of reading material, including fiction, non-fiction, manga, e-books, graphic novels, newspapers and picture books to choose from.

Open during Break 1 and Break 2 most days, and before school on Tuesday, Wednesday and Thursday from 8.30am, students are encouraged to come along to read, borrow, or engage in one of our many available activities.

BORROWING

All students are encouraged to borrow before school, during break times and during lessons if their class is in the Library. Books are borrowed for a period of 2 weeks but can be renewed multiple times whilst the book is being read. Students are expected to take care of their library books whilst they are borrowed and return them safely.

Students can also access our catalogue 24/7 through the Student Portal and Canvas, or choose from a wide range of eBooks also available 24/7.

TECH. FREE "T" DAYS

On Tuesdays and Thursdays we are Tech. Free! Students can engage in reading, social games and hands-on activities. These include colouring or drawing, Lego building, chess, board games, card games and more. However students are always welcome to access computers for school related work.



CHESS CLUB - Thursdays during Break 1 we have a very well attended and enthusiastic Chess Club - if you play chess, or are interested in learning to play, please pop into the library to find out more.



BOOK CLUB

Held during Break 2 on Thursdays, our group of avid readers enjoy reading together and discussing their book. Have a chat to the Library staff for more information if you are interested in joining Book Club.

SPECIAL EVENTS

We celebrate special events in our library throughout the year with interesting displays, special guests, workshops and hands on activities.

A big week for our Library is Book Week. With scavenger hunt, themed displays, activities and a staff and student character parade. Great fun for all!



Celebrating success: Support Unit thriving in 2024

As we begin the new school year, we are thrilled to report on the successful start of the Support Unit in 2024. The unit is designed to meet the diverse needs of our students, and has seen a wealth of engaging activities and opportunities, including vocational training and hands-on learning.

Our Year 10 students have had the opportunity to enrol in 'Taste of TAFE' courses, which provide hands-on exploration of trade subjects and valuable insights into potential career paths. This program fosters confidence and direction as students prepare for their next phase of education and career.

Furthermore, students have gained hands-on work experience through the school's coffee van initiative, cultivating professional skills and work ethic.



LAND AHOY!

Some of our students have participated in a "Learn to Sail" course. Learning to sail not only provides a break from the traditional classroom setting but also teaches valuable life skills such as problem-solving, decision-making, and adaptability. The experience has been a source of joy and empowerment for our students, allowing them to explore new horizons and develop a passion for adventure and the natural environment.

We are very excited about the construction of the new Support Unit. Building is well underway, promising a modern and purpose-built learning environment that caters to the unique requirements of our students. This new facility will enhance accessibility and create an inclusive and supportive space for students to thrive. We eagerly anticipate its completion.

The Support Unit has had a promising start to the year, with a range of enriching experiences and developments. We have implemented the new English and Mathematics Curriculums, ensuring a tailored and contemporary education for students, which aligns with their individual learning needs.

The dedication of our staff, enthusiasm of our students, and support of our community have created an environment where every student can flourish. We look forward to continuing this positive momentum and embracing the opportunities ahead.



Every Day Matters

Make sure your child doesn't miss out on the important things like:

Learning



Strengthening friendships



Emotional development



When it comes to attending school, every day matters.

Scan the QR code to learn more



FEB 2024

26	P&C Meeting - 5.30pm Wallsend Campus Library
----	-------------------------------------------------

Free After School Tutoring (FAST) Centre

If students need a bit of extra help with their homework or schoolwork, our FAST Centre is open each Tuesday after school, from 3.00pm until 4.00pm in the Library. All welcome!

MAR 24

1	City Zone Swimming Carnival
1	YAKKA Careers Expo
4 - 7	NSW Dental Care Visit
8	Wallsend Campus whole school Swimming Carnival
13-25	NAPLAN Testing Window
18-24	Harmony Week



Support Unit Mural

Collage of items found around the school



Follow us on social media to keep up with our news and events, plus find out when important emails have been sent.



Callaghan College Wallsend Campus

02 4981 1811

wallsend-h.school@det.nsw.edu.au